



Network

Dome

# XND-8020R

5M H.265 IR Dome Camera



## Key Features

- Built-in 3.7mm/4.6mm/7.0mm fixed lens
- Max. 30fps@all resolutions (H.265/H.264)
- Loitering, Directional detection, Fog detection
- Digital auto tracking, Sound classification, Heatmap
- People counting, Queue management, Tampering
- Motion detection, Handover
- Dual SD slots (Max. 512GB), WiseStream II support
- IR viewable length 30m, IK08

## Compatible Accessories (Optional)



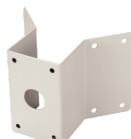
SPB-IND11



SBP-120WM



SBP-300PM



SBP-300KM



SBP-300LM



SBP-390WM2



SBP-300WM1



SBP-300CM



SBP-300HM7



SBP-300WM



SBP-300NB



SBP-300B

# XND-8020R

5M H.265 IR Dome Camera



## Specifications

| Video                       |   |
|-----------------------------|---|
| Imaging Device              | 1/1.8" 6MP CMOS   |
| Resolution                  | 2560x1920, 2560x1440, 1920x1080, 1600x1200, 1280x1024, 1280x960, 1280x720, 1024x768, 800x600, 800x448, 720x576, 720x480, 640x480, 640x360, 320x240  |
| Max. Framerate              | H.265/H.264: Max.30fps/25fps(60Hz/50Hz)<br>MJPEG: Max.30fps/25fps(60Hz/50Hz)  |
| Min. Illumination           | Color: 0.16Lux(F1.6, 1/30sec)<br>BW: 0Lux(IR LED on)  |
| Video Out                   | CVBS: 1.0 Vp-p / 75Ω composite, 720x480(N), 720x576(P) for installation<br>USB: Micro USB Type B, 1280x720 for installation   |
| Lens                        |   |
| Focal Length (Zoom Ratio)   | 3.7mm fixed focal   |
| Max. Aperture Ratio         | F1.6  |
| Angular Field of View       | H: 97.5° / V: 71.9° / D: 126.2°   |
| Min. Object Distance        | 0.4m(1.31ft)  |
| Focus Control               | Fixed   |
| Pan / Tilt / Rotate         |   |
| Pan / Tilt / Rotate Range   | 0°~354° / 0°~67° / 0°~355°  |
| Operational                 |   |
| Camera Title                | Displayed up to 85 characters   |
| Day & Night                 | Auto(ICR)   |
| Backlight Compensation      | BLC, HLC, WDR   |
| Wide Dynamic Range          | 120dB   |
| Digital Noise Reduction     | SSNRV   |
| Digital Image Stabilization | Support(built-in gyro sensor)   |
| Defog                       | Support(built-in optical filter)  |
| Motion Detection            | 8ea, 8point polygonal zones   |
| Privacy Masking             | 32ea, polygonal zones<br>- Color: Grey/Green/Red/Blue/Black/White<br>- Mosaic   |
| Gain Control                | Low / Middle / High   |
| White Balance               | ATW / AWC / Manual / Indoor / Outdoor   |
| LDC                         | Support   |
| Electronic Shutter Speed    | Minimum / Maximum / Anti flicker (2~1/12,000sec)  |
| Video Rotation              | Flip, Mirror, Hallway view(90°/270°)  |
| Analytics                   | Defocus detection, Directional detection, Fog detection, Face detection, Motion detection, Digital auto tracking, Appear/Disappear, Enter/Exit, Loitering, Tampering, Virtual line, Audio detection, Sound classification |

Design and specifications are subject to change without notice. The latest product information / specification can be found at [HanwhaVision.com](http://HanwhaVision.com)

Hanwha Vision is formerly known as Hanwha Techwin.

## XND-8020R

|                       |  |
|-----------------------|--|
| Business Intelligence | People counting, Queue management, Heatmap   |
| Alarm I/O             | Input 1ea / Output 1ea   |
| Alarm Triggers        | Analytics, Network disconnect, Alarm input   |
| Alarm events          | File upload via FTP and e-mail<br>Notification via e-mail<br>SD/SDHC/SDXC or NAS recording at event triggers<br>Alarm output |
| Audio In              | Selectable(mic in/line in),<br>Supply voltage: 2.5VDC(4mA), Input impedance: 2K Ohm  |
| Audio Out             | Line out, Max.output level: 1Vrms  |
| IR Viewable Length    | 30m(98.43ft)   |

### Network

|                                   |  |
|-----------------------------------|--|
| Ethernet                          | RJ-45(10/100BASE-T)  |
| Video Compression                 | H.265/H.264: Main/Baseline/High, MJPEG   |
| Audio Compression                 | G.711 u-law / G.726 Selectable<br>G.726(ADPCM) 8KHz, G.711 8KHz<br>G.726: 16Kbps, 24Kbps, 32Kbps, 40Kbps<br>AAC-LC: 48Kbps at 8/16/32/48KHz  |
| Smart Codec                       | Manual(5ea area), WiseStream II  |
| Bitrate Control                   | H.264/H.265: CBR or VBR<br>MJPEG: VBR  |
| Streaming                         | Unicast(20 users) / Multicast<br>Multiple streaming(Up to 10 profiles)   |
| Protocol                          | IPv4, IPv6, TCP/IP, UDP/IP, RTP(UDP), RTP(TCP), RTCP, RTSP, NTP, HTTP, HTTPS, SSL/TLS, DHCP, PPPoE, FTP, SMTP, ICMP, IGMP, SNMPv1/v2c/v3(MIB-2), ARP, DNS, DDNS, QoS, UPnP, Bonjour, SRTP (TCP, UDP Unicast) |
| Security                          | HTTPS(SSL) Login Authentication<br>Digest Login Authentication<br>IP Address Filtering<br>User access log<br>802.1X Authentication(EAP-TLS, EAP-LEAP)  |
| Application Programming Interface | ONVIF Profile S/G<br>SUNAPI(HTTP API)<br>Wisenet open platform   |

### General

|              |   |
|--------------|---|
| Web Viewer   | Supported OS : Windows 7, 8.1, 10, Mac OS X 10.10, 10.11, 10.12<br>Recommended Browser: Google Chrome<br>Supported Browser: MS Explore11, Mozilla Firefox(Window 64bit only), Apple Safari(Mac OS X only) |
| Edge Storage | Micro SD/SDHC/SDXC 2slot 512GB  |
| Memory       | 1024MB RAM, 256MB Flash   |

### Environmental & Electrical

|                                  |  |
|----------------------------------|--|
| Operating Temperature / Humidity | -10°C ~ +55°C(+14°F ~ +131°F) / Less than 90% RH |
| Storage Temperature / Humidity   | -50°C ~ +60°C(-58°F ~ +140°F) / Less than 90% RH |
| Certification                    | IK08   |
| Input Voltage                    | PoE(IEEE802.3af, Class3), 12VDC                  |
| Power Consumption                | PoE: Max 9.00W<br>12VDC: Max 8.00W               |

### Mechanical

|                             |   |
|-----------------------------|---|
| Color / Material            | Ivory / Aluminum                          |
| Product Dimensions / Weight | Ø110.0x90.0mm(Ø4.33x3.54"), 380g(0.84 lb) |